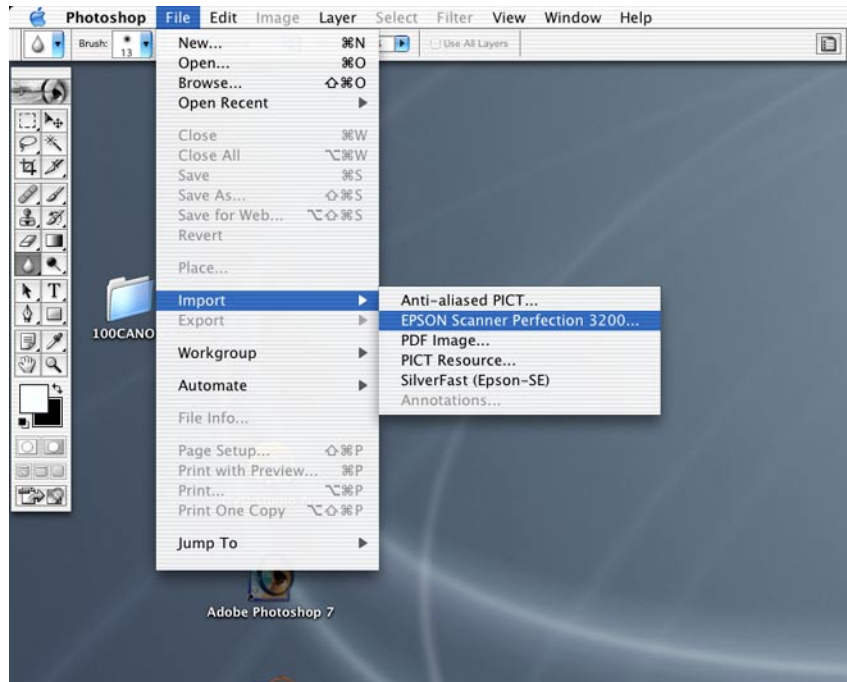


Scanning reflective (photos, paper media) documents is easy and quick on the Epson. Follow these simple instructions:

1. In Photoshop, choose File > Menu > Import > Epson Scanner Perfection 3200.



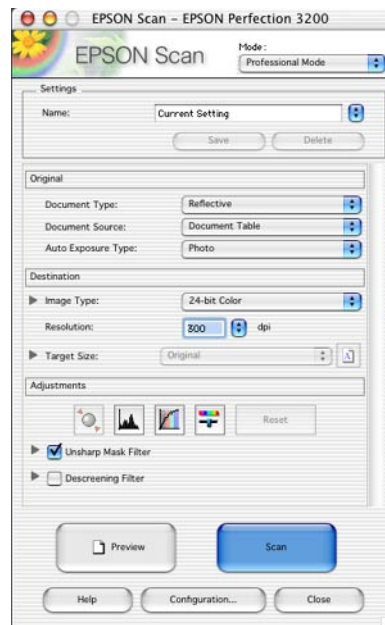
2. The Epson Scan interface loads.

Document Type should be "Reflective."  
 Document Source is the Document Table,  
 the glass bed of the scanner.  
 Auto Exposure Type is Photo.

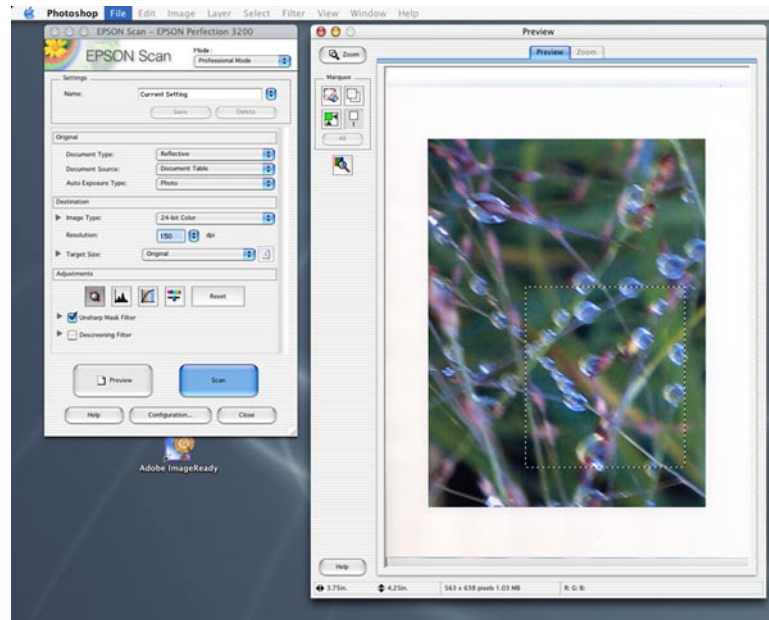
Change any settings under "Destination"  
 that you see fit.

Remember, if you are authoring only for  
 screen, 72 ppi is adequate.

When you are finished, click "Preview."



3. Once the preview has completed, use your mouse to draw a box around the area you would like to scan.



4. Press the "Scan" button.

5. Your scanned image appears in Photoshop:

