

PREPARING TO SCAN

Locate the holder appropriate to your transparent media (they are stored in the second drawer of the black file cabinet). For our example, we're using the 35mm Film Holder.

Load your media according to the orientation in the holder. The emulsion side should be up.

Turn on the scanner, if it is not on already.

Launch Scanwizard Pro 7 by clicking on the icon in the dock.

The scan interface loads.

SCAN SETTINGS

First, you'll need to change the scan type in the Overview Image Window. Your choices are Reflective, Negative, and Positive. Since we are scanning film negatives, I'll choose "Negative."

Setting this will affect the settings dialog box. Pictured at lower right is an example of what your settings might be if you were scanning 35mm color negatives.

Resolution: the resolution of the output.

Scaling: how much larger you want your final image to be.

The Output dimensions will change according to the value you type into the "Scaling" window, and show you the file size of the final image.

You might experiment with the values in the "Film Type" drop down box at the bottom to see which profile best suits your images.

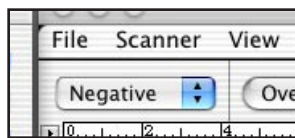
When you're finished, click the "Overview" button in the main window.



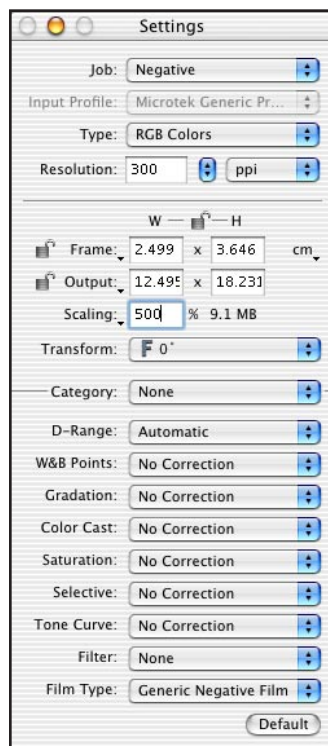
35MM FILM HOLDER IN TRAY



SCANWIZARD PRO 7 ICON



SET SCAN TYPE



SETUP FOR FILM MASK

SCANNING TRANSPARENCY: ARTIXSCAN 1800F

When the scanner completes the overview, you'll be able to crop out the areas you want scanned.

The first crop can be simply readjusted or redrawn to fit the frame of film or slide. To make additional crops for batch scanning, you'll need to hold down the shift key. The cursor will turn into a "+" with a smaller + next to it. Highlight all you want to scan and then you can go back and readjust each one. After the initial drawing of the crop, you don't need to hold the shift key down anymore.

You can make adjustments to image quality by using the Scanwizard Pro tools. The adjustments will be specific to the crop that is active at the time the adjustment is made.

The scan queue is being populated as you create crops, as pictured at right. All checked images will be scanned.

When you are ready to scan, click the "Scan" button at the top of the Overview Image Window.

The Save dialog box appears:

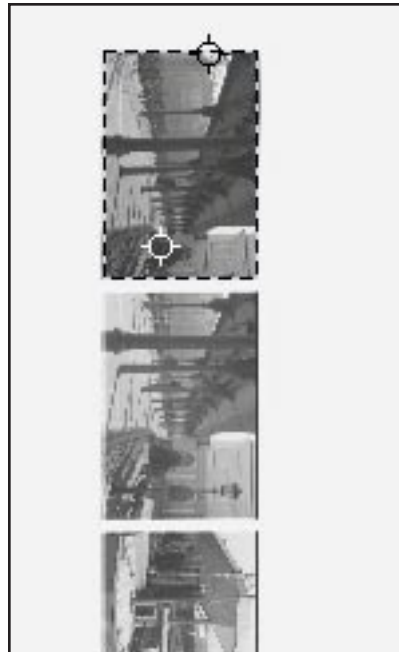
Save As: type your name or the name of your scan project.

Where: create a folder on the desktop called "yourname_scans"

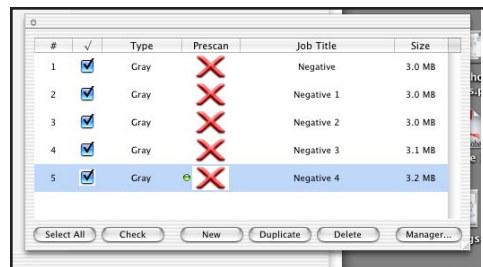
Format: TIFF is preferred because it does not compress any data.

Autonumber File Names: scroll down to the number you wish the numbers to begin at.

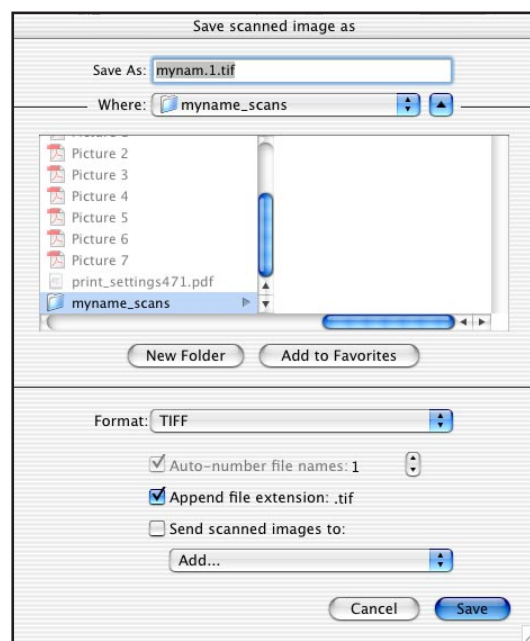
Click on "Save."



SELECTING AREAS TO SCAN



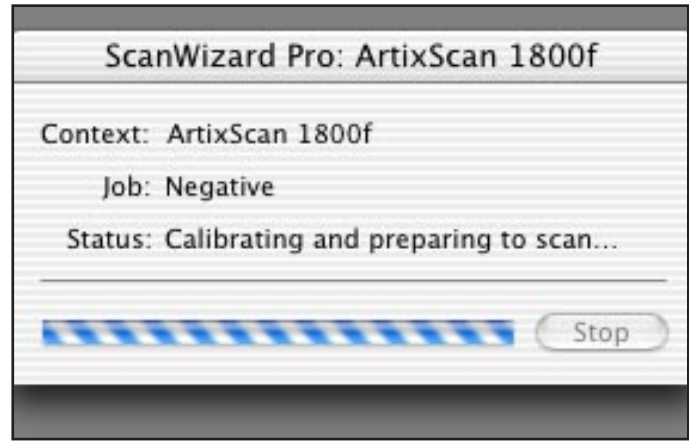
SCAN QUEUE WINDOW



CROPPING AREAS TO SCAN

You can walk away while the scanner works.

Be sure to transfer your files to a network or jump drive, as we cannot guarantee they will be there after the day they were scanned.



SCANNING