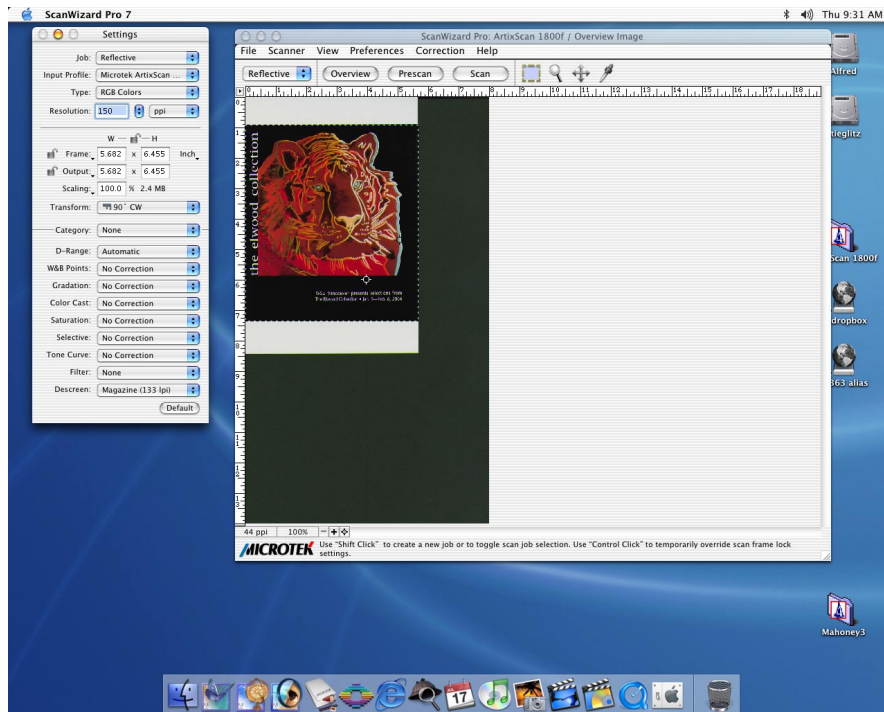


Scanning reflective (photos, paper media) documents is remarkably easy on the Microtek Scanner.

1. On the Macintosh, choose "ScanWizard Pro" from the program dock at the bottom of the screen. The program launches.



2. The ScanWizard Pro interface appears.

For flatbed scanning, "Reflective" is the correct setting.

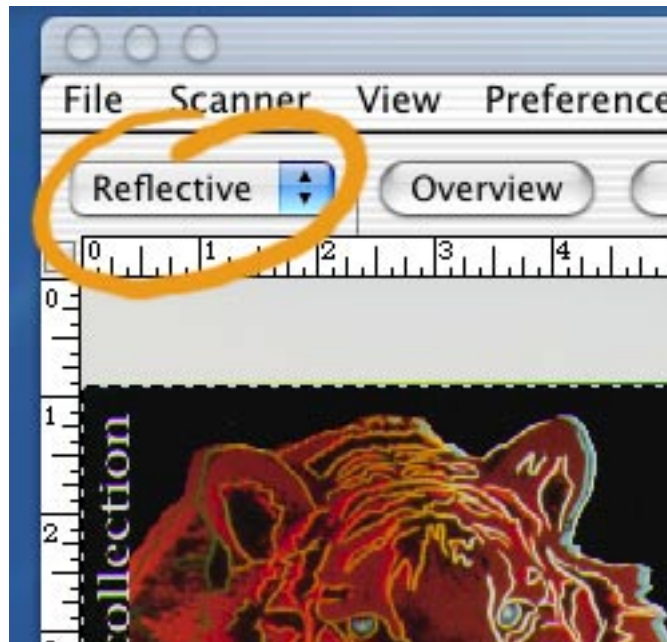
Click "Overview" to preview your image.

You'll need to adjust the crop or "dancing ants" area to encompass your image.

Zoom in and out using the + and - buttons on the bottom of the window.

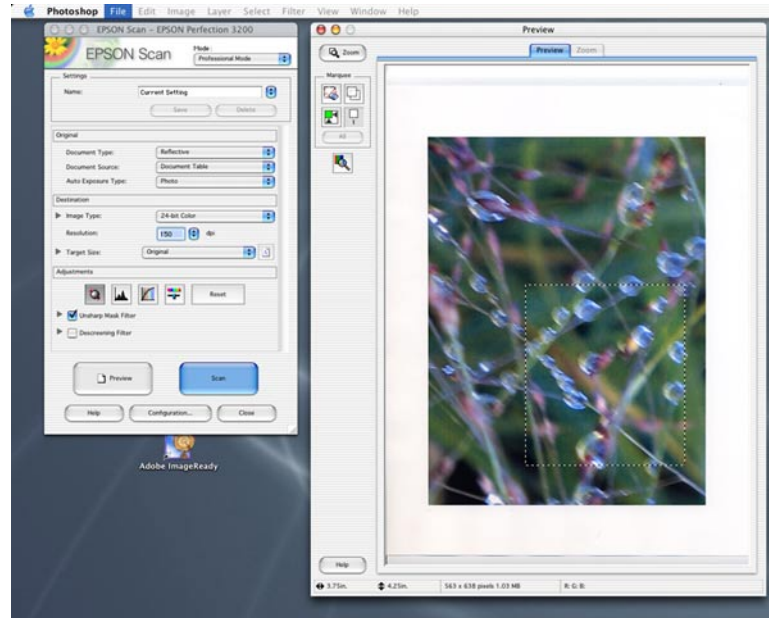
Multiple areas may be scanned by holding down the shift key and dragging a box around the desired area.

When you are finished, click "Scan."



Scanning reflective images

- Once the preview has completed, use your mouse to draw a box around the area you would like to scan.



- Press the "Scan" button.

- Your scanned image appears in Photoshop:

